

Main specifications of **α7R II**

General	
Camera type	Interchangeable-lens digital camera
Lens mount	E-mount
Image sensor	
Type	35mm full frame (35.9 x 24.0mm), <i>Exmor R</i> CMOS sensor
Number of pixels (effective)	Approx. 42.4 megapixels
Number of pixels (total)	Approx. 43.6 megapixels
Image sensor aspect ratio	3:2
Anti-dust system	Charge protection coating on optical filter and image sensor shift mechanism
Recording system (still images)	
Recording format	JPEG (DCF Ver. 2.0, Exif Ver. 2.3, MPF baseline compliant), RAW (Sony ARW 2.3 format)
3:2 aspect ratio	35mm full frame L: 7952 x 5304 (42M), M: 5168 x 3448 (18M), S: 3984 x 2656 (11M) APS-C L: 5168 x 3448 (18M), M: 3984 x 2656 (11M), S: 2992 x 1728 (4.5M)
Image size (pixels)	35mm full frame L: 7952 x 4472 (36M), M: 5168 x 2912 (15M), S: 3984 x 2240 (8.9M) APS-C L: 5168 x 2912 (15M), M: 3984 x 2240 (8.9M), S: 2992 x 1456 (3.8M)
16:9 aspect ratio	Wide: Horizontal 12416 x 1856 (23M), vertical 5536 x 2160 (12M), Standard: Horizontal 8192 x 1856 (15M), vertical 3872 x 2160 (8.4M)
Sweep Panorama	
Image quality modes	
RAW output	RAW, RAW & JPEG, JPEG Extra fine, JPEG Fine, JPEG Standard
RAW output	14 bit
Picture Effect	13 modes: Posterization (Color, B/W), Pop Color, Retro Photo, Partial Color (R, G, B, Y), High Contrast Monochrome, Toy Camera, Soft High-key, Soft Focus, HDR Painting, Rich-tone Monochrome, Miniature, Watercolor, Illustration
Creative Style	Standard, Vivid, Neutral, Clear, Deep, Light, Portrait, Landscape, Sunset, Night Scene, Autumn Leaves, Black & White, Sepia (Contrast -3 to +3 steps, Saturation -3 to +3 steps, Sharpness -3 to +3 steps) (Style Box 1-5 also provided)
Dynamic range functions	Off, Dynamic Range Optimizer (Auto/Level [1-5]), Auto High Dynamic Range: Auto Exposure Difference, Exposure Difference Level (1.0-6.0 EV, 1.0 EV step)
Color space	sRGB standard (with sYCC gamut) and Adobe RGB standard compatible with TRILLUMINOS™ Color
Recording system (movies)	
Recording format	XAVC S / AVCHD format Ver. 2.0 compliant / MP4
Video compression	XAVC S: MPEG-4 AVC/H.264 AVCHD: MPEG-4 AVC/H.264 MP4: MPEG-4 AVC/H.264
Audio recording format	XAVC S: LPCM, 2ch AVCHD: Dolby Digital (AC-3), 2ch, Dolby Digital Stereo Creator MP4: MPEG-4 AAC-LC, 2ch
NTSC	XAVC S 4K: 3840 x 2160 (30p/100Mbps, 30p/60Mbps, 24p/100Mbps, 24p/60Mbps) XAVC S HD: 1920 x 1080 (60p/50Mbps, 30p/50Mbps, 24p/50Mbps), 1280 x 720 (120p/50Mbps) AVCHD: 1920 x 1080 (60p/28Mbps/PS, 60i/24Mbps/FX, 60i/17Mbps/FH, 24p/24Mbps/FX, 24p/17Mbps/FH)
Image size (pixels)	MP4: 1920 x 1080 (60p/28Mbps, 30p/16Mbps), 1280 x 720 (30p/6Mbps) XAVC S 4K: 3840 x 2160 (25p/100Mbps, 25p/60Mbps) XAVC S HD: 1920 x 1080 (50p/50Mbps, 25p/50Mbps), 1280 x 720 (100p/50Mbps) AVCHD: 1920 x 1080 (50p/28Mbps/PS, 50i/24Mbps/FX, 50i/17Mbps/FH, 25p/24Mbps/FX, 25p/17Mbps/FH)
PAL	MP4: 1920 x 1080 (50p/28Mbps, 25p/16Mbps), 1280 x 720 (25p/6Mbps) XAVC S 4K: 3840 x 2160 (25p/100Mbps, 25p/60Mbps) XAVC S HD: 1920 x 1080 (50p/50Mbps, 25p/50Mbps), 1280 x 720 (100p/50Mbps) AVCHD: 1920 x 1080 (50p/28Mbps/PS, 50i/24Mbps/FX, 50i/17Mbps/FH, 25p/24Mbps/FX, 25p/17Mbps/FH)
Picture Profile	MP4: 1920 x 1080 (50p/28Mbps, 25p/16Mbps), 1280 x 720 (25p/6Mbps) Yes (Off / PP1-PP7) Parameters: Black level, Gamma (Movie, Still, Cine)-4, ITU709, ITU709 (800K), S-Lens2, Black Gamma, Knee, Color Mode, Saturation, Color Phase, Color Depth, Detail, Copy, Reset
Movie functions	Audio Level Display, Audio Rec Level, AF Tracking Sensitivity, AF Drive Speed, Auto Slow Shutter, HDMI info. Display (On/Off selectable), Time Code/User Bit, Picture Profile, Creative Style, Picture Effect, Rec Control, Dual Video Rec, Marker Setting, PAL/NTSC Selector
Color space	xyYCC standard (x.v.Color when connected via HDMI cable) compatible with TRILLUMINOS™ Color
Clean HDMI output	
NTSC	3840 x 2160 (30p/24p) / 1920 x 1080 (60p/24p) / 1920 x 1080 (60i), YCbCr 4:2:2 8bit/ RGB 8bit
PAL	3840 x 2160 (25p) / 1920 x 1080 (50p) / 1920 x 1080 (50i), YCbCr 4:2:2 8bit/ RGB 8bit
Media	
Media	Memory Stick PRO Duo, Memory Stick PRO-HG Duo, Memory Stick Micro (M2), SD memory card, SDHC memory card (UHS-I compliant), SDXC memory card (UHS-I compliant), microSD memory card, microSDXC memory card, microSDXC memory card
Slot	Multi slot for Memory Stick Duo / SD memory card
Noise reduction	
Noise reduction	Long exposure NR: On/Off, available at shutter speeds longer than 1 sec., High ISO NR: Normal/Low/Off selectable
Multi Frame NR	Auto/ISO 100 to 102400
White balance	
Modes	Auto WB / Daylight / Shade / Cloudy / Incandescent / Fluorescent (Warm White / Cool White / Day White / Daylight) / Flash / Color Temperature (2500 to 9900K) & Color Filter (G7 to M7: 57 steps, A7 to B7: 29 steps) / Custom / Underwater
AWB micro adjustment	G7 to M7 (57 steps), A7 to B7 (29 steps)
Bracketing	3 frames, H/L selectable
Focus system	
Type	Fast Hybrid AF (phase-detection AF / contrast-detection AF)
Focus point	35mm full frame: 399 points (phase-detection AF), APS-C: 357 points (phase-detection AF) / 25 points (contrast-detection AF)
Sensitivity range	EV -2 to EV 20 (at ISO 100 equivalent with F2.0 lens attached)
AF modes	Automatic AF (AF-A), Single-shot AF (AF-S), Continuous AF (AF-C), Direct Manual Focus (DMF), Manual Focus
Focus area	Wide (399 points for phase-detection AF / 25 points for contrast-detection AF) / Center / Flexible Spot (S/M/L) / Zone / Expand Flexible Spot / Lock-on AF (Wide / Zone / Center / Flexible Spot (S/M/L) / Expand Flexible Spot)
Other features	Lock-on AF, Eye AF, Predictive control, Focus lock; Eye-start AF and AF micro adjustment (both only available with optional LA-EA2 or LA-EA4 attached), AF illuminator (built-in, LED type, range: Approx. 0.30-3m), AF ON
Exposure control	
Metering type	1200-zone evaluative metering
Metering sensor	Exmor R CMOS sensor
Metering sensitivity	EV -3 to EV 20 (at ISO 100 equivalent with F2.0 lens attached)
Metering modes	Multi-segment, Center-weighted, Spot
Exposure modes	AUTO (AUTO, Superior Auto), Programmed AE (P), Aperture priority (A), Shutter-speed priority (S), Manual (M), Scene Selection, Sweep Panorama, Movie
Scene Selection	Portrait, Landscape, Macro, Sports Action, Sunset, Night Portrait, Night Scene, Hand-held Twilight, Anti Motion Blur
Exposure compensation	+/-5.0 EV (in 1/3 EV or 1/2 EV steps), with exposure compensation dial: +/-3.0 EV (in 1/3 EV steps)
AE bracketing	Bracket: Single/Bracket: Cont., 3/5/9 frames selectable. With 3 or 5 frames, in 1/3, 1/2, 2/3, 1.0, 2.0 or 3.0 EV increments, with 9 frames, in 1/3, 1/2, 2/3 or 1.0 EV increments.
AE lock	Available with AE lock button. Locked when shutter button is pressed halfway. Can be disabled from the Menu.
ISO sensitivity (Recommended Exposure Index)	Still images: ISO 100-25600 (expandable to ISO 50-102400 for shooting still images), AUTO (ISO 100-6400, selectable lower limit and upper limit), Movies: ISO 100-25600 equivalent, AUTO (ISO 100-6400 equivalent, selectable lower limit and upper limit)
Viewfinder	
Type	XGA OLED, 1.3cm (0.5 type) electronic viewfinder (color)
Total number of dots	2,359,296 dots
Brightness control	Auto/Manual (5 steps between -2 and +2)
Color temperature control	Manual (5 steps)
Field coverage	100%
Magnification	Approx. 0.78x (with 50mm lens at infinity, -1m ⁻¹)

Sony World Photography Awards

For more details, visit the website at: www.worldphoto.org

You can check the computer requirements for the software at: www.sony.net/pcenv/

Trademarks & Remarks

- "α", "Exmor", "Exmor R", "BIONZ X", "BRAVIA", "SteadyShot", "InfoLithium", "Translucent Mirror Technology", "Tru-Finder", "Memory Stick", "Memory Stick PRO Duo", "Memory Stick PRO-HG Duo", "PlayMemories Home", "PlayMemories Mobile", "PlayMemories Camera Apps", "x.v.Color", "TRILLUMINOS", "TRILLUMINOS Color", "TRILLUMINOS Display" and "XAVC S" are trademarks or registered trademarks of Sony Corporation.
- "Xperia" is a trademark or registered trademark of Sony Mobile Communications AB.
- "AVCHD" and "AVCHD Progressive" are trademarks of Panasonic Corporation and Sony Corporation.
- The SD Logo, SDHC Logo and SDXC Logo are trademarks of SD-3C, LLC.
- The Terms HDMI and HDMI High-Definition Multimedia Interface, and the HDMI Logo are trademarks or registered trademarks of HDMI Licensing LLC in the United States and other countries.
- The Wi-Fi Protected Setup Identifier Mark is a mark of the Wi-Fi Alliance.
- N-Mark is a registered trademark of the NFC Forum.
- Dolby is a trademark of Dolby Laboratories.
- WhiteMagic is a trademark of Japan Display Inc.
- App Store is a service mark of Apple Inc.
- Android, Google Play and Google Play logo are trademarks or registered trademarks of Google Inc.
- iPad is a trademark of Apple Inc., registered in the U.S. and other countries.
- All other company and product names mentioned herein are used for identification purposes only and may be the trademarks or registered trademarks of their respective owners.
- "InfoLithium" is a lithium battery pack which can exchange data with compatible electronic equipment about its energy consumption.
- Sony recommends that you use the battery pack with electronic equipment bearing the "InfoLithium" mark.
- Screen displays and effects used to illustrate some functions are simulated.
- The theater photos on P.11 are courtesy of Theater of San Carlo in Naples, Italy.

Enter the exciting world of Sony α products through a Library, the new photography-themed application for tablets.



Go to Google Play for Android Tablet. For iPad, go to App Store. Then search for "sony α library".

Sony | Photo Galley:

http://www.sony.net/Products/di_photo_gallery/



Sony | Camera Channel:

<https://www.youtube.com/c/ImagingbySony>



Dioptr adjustment	-4.0 to +3.0m ⁻¹
Eye point	Approx. 23mm from the eyepiece lens, 18.5mm from the eyepiece frame at -1m ⁻¹ (CIPA standard)
Display	Graphic Display / Display All Info. / No Disp. Info. / Histogram / Digital Level Gauge
Real-time image-adjustment display	On/Off
LCD screen	
Type	7.5cm (3.0 type) TFT drive
Total number of dots	1,228,800 dots
Brightness control	Manual (5 steps between -2 and +2), Sunny Weather mode
Adjustable angle	Up approx. 107 degrees, down approx. 41 degrees
Display selector (Finder/LCD)	Auto/Manual
Display	Graphic Display / Display All Info. / No Disp. Info. / Histogram / Digital Level Gauge / Shooting information for viewfinder mode
Real-time image-adjustment display	On/Off
Zebra	Yes
Peaking MF	Yes (Level setting: High/Mid/Low/Off, Color: White/Red/Yellow)
Other features	
Face detection	On / On (Regist. Faces) / Off, Face registration, Face selection (Max. number of detectable faces: 8)
Auto Object Framing	Yes
Clear Image Zoom	Still / Movie: Approx. 2x
Smart zoom (still images)	M: Approx. 1.5x, S: Approx. 2.0x
Digital zoom (still images)	Approx. 4x
Digital zoom (movies)	Approx. 4x
PlayMemories Camera Apps	
Yes	
Lens compensation	
Peripheral shading, chromatic aberration, distortion	
Shutter	
Type	Electronically controlled, vertical-traverse, focal-plane type
Still images: 1/8000 to 30 sec., Bulb	
Movies: 1/8000 to 1/4 (1/3 step)	
NTSC: Up to 1/60 in AUTO mode (up to 1/30 in Auto Slow Shutter mode)	
PAL: Up to 1/50 in AUTO mode (up to 1/25 in Auto Slow Shutter mode)	
Shutter speed	
Flash sync. speed	1/250 sec.
Electronic front curtain shutter	Yes, On/Off
Silent Shooting	Yes, On/Off
SteadyShot INSIDE (image stabilization)	
Type	Image Sensor-Shift mechanism with 5-axis compensation (Compensation depends on lens specifications)
Compensation effect	4.5 steps (Based on CIPA standard. Pitch/yaw shake only. With Sonnar T* FE 55mm F1.8 ZA lens mounted. Long exposure NR off)
Flash Control (with optional external flash)	
Control	Pre-flash TTL
Flash compensation	+/-3.0 EV (switchable between 1/3 and 1/2 EV steps)
Flash bracketing	3/5/9 frames selectable. With 3 or 5 frames, in 1/3, 1/2, 2/3, 1.0, 2.0, 3.0 EV increments, with 9 frames, in 1/3, 1/2, 2/3, 1.0 EV increments.
Flash modes	Flash off, Autoflash, Fill-flash, Rear Sync., Slow Sync., Red-eye reduction (On/Off selectable), Hi-speed sync*, Wireless*
External flash	Sony α System Flash compatible with Multi Interface Shoe. Attach the shoe adaptor for flash compatible with Auto-lock Accessory Shoe.
FE level lock	Yes
Drive	
Drive modes	Single shooting, Continuous shooting, Self-timer, Self-timer (Cont.), Bracketing (Cont., Single, White Balance, DRO)
Self-timer	10 sec. delay/5 sec. delay/2 sec. delay/Continuous self-timer (3 frames after 10 sec. delay/5 frames after 10 sec. delay/3 frames after 5 sec. delay/5 frames after 5 sec. delay/3 frames after 2 sec. delay/5 frames after 2 sec. delay/Bracketing self-timer (Off/2 sec. delay/5 sec. delay/10 sec. delay)
Speed (approx., max.) ²	Continuous shooting Hi: Max. 5fps, Continuous shooting Lo: Max. 2.5fps
No. of recordable frames ³ (approx.)	Continuous shooting Hi: 24 frames (JPEG Extra Fine L), 30 frames (JPEG Fine L), 37 frames (JPEG Standard L), 23 frames (RAW & JPEG)
Playback	
Single (with or without shooting information, Y RGB histogram & highlight/shadow warning), 9/25-frame index view, Enlarged display mode (Maximum magnification L: 24.9x, M: 16.2x, S: 9.4x), Auto Review (10/5/2 sec. off), Image orientation (Auto/Manual/Off selectable), Slideshow, Panorama scrolling, Folder selection (Still / Date / MP4 / AVCHD / XAVC S HD / XAVC S 4K), Forward/Rewind (Movie), Delete, Protect	
Interface	
PC interface	Mass-storage, MTP, PC remote
Multi / Micro USB Terminal	Yes*
Wireless LAN (built-in)	Wi-Fi Compatible (IEEE802.11b/g/n (2.4GHz band))* Playback of still images and movies on smartphones, PCs and TVs
NFC™	Yes (NFC Forum Type 3 Tag compatible, One-touch remote, One-touch sharing)
HD output	HDMI micro connector (Type-D), BRAVIA Sync (link menu), PhotoTV HD, 4K movie output, 4K still image playback
Multi Interface Shoe	Yes
Others	Auto-lock Accessory Shoe compatible with supplied shoe adaptor, Microphone terminal (3.5mm Stereo minijack), Headphone terminal (3.5mm Stereo minijack), Vertical Grip connector
Audio	
Microphone	Built-in stereo microphone or ECM-XYSTIM / XLR-K2M (sold separately)
Speaker	Built-in, monaural
Print	
Compatible standards	Exif Print, Print Image Matching III, DPOF setting
Custom function	
Type	Custom key settings, Programmable setting
Memory function	Yes (2 sets)
Power	
Battery	Rechargeable battery pack NP-FW50
Still images	Approx. 290 shots (viewfinder) / approx. 340 shots (LCD screen) (CIPA standard)
Movies	Actual***: Approx. 50 min. with viewfinder, approx. 55 min. with LCD screen (CIPA standard) Continuous***: Approx. 95 min. with viewfinder, approx. 95 min. with LCD screen (CIPA standard)
External power	
AC Adaptor AC-PW20 (optional)	
Weight	
With battery and Memory Stick PRO Duo	Approx. 625g (approx. 1 lb 6.0 oz.)
Body only	Approx. 582g (approx. 1 lb 4.5 oz.)
Dimensions	
W x H x D (excluding protrusions)	Approx. 126.9 x 95.7 x 60.3mm (approx. 5 x 3 7/8 x 2 3/8 in.)
Operating temperature	
Range	32°-104°F / 0-40°C

Specifications and features are subject to change without notice.

- *1 With compatible external flash.
 - *2 Approximate. May vary depending on shooting conditions and media.
 - *3 Supports Micro USB compatible device.
 - *4 Configuration method/Access method: WPS or manually/infrastructure mode. When connecting to smartphones, the camera can always work as a base without a wireless access point. (Security: WEP/WPA-PSK/WPA2-PSK)
 - *5 Continuous movie recording is possible for approximately 29 minutes (limited by product specifications).
 - *6 Indicated recording time is defined by repeating the following cycle: Power on, start recording, zoom, stand-by and power off.
 - *7 Indicated recording time is defined by repeating the following cycle: Pressing the MOVIE button. No other operations such as zoom are performed.
- <http://www.sony.net/digitalimaging/>

SONY

Interchangeable-lens digital camera



α7R II

The Power of Imaging

Printed in Japan

α7R II

Full-frame, palm-sized α. Reality realized.

See reality as your mind's eye envisions it with the incredible new Sony α7R II. The world's first*¹ back-illuminated 35mm full-frame CMOS image sensor gives this camera capability to deliver 42.4-megapixel*² resolution, high sensitivity and fast response that are apparent in every amazing picture. The Fast Hybrid AF system's extra-wide dense focal plane phase-detection AF coverage keeps subjects in sharp focus, while 5-axis image stabilization reduces blur which otherwise tends to affect handheld shots. High-resolution imaging is further enhanced by 4K movie recording now featuring full pixel readout without pixel binning. With so much innovation packed into such a compact form, it's clear that there is more to life than meets the naked eye.

- The world's first*¹ back-illuminated 35mm full-frame Exmor R™ CMOS sensor with 42.4 megapixels*²
- BIONZ X™ image processing engine
- High sensitivity up to ISO 102400*³
- Fast Hybrid AF upgraded to 399-point wide focal plane phase-detection AF coverage
- 5-axis image stabilization for stills and movies
- Higher-resolution 4K (QFHD: 3840 x 2160) movie recording features full pixel readout without pixel binning in Super 35mm format
- XGA OLED Tru-Finder™ with ZEISS® T* Coating features the world's highest*⁴ viewfinder magnification of 0.78x
- Wi-Fi/NFC™ functions
- PlayMemories Camera Apps™



*¹ Among digital still cameras equipped with a 35mm full-frame image sensor. As of June 2015 based on Sony research.

*² Approximate effective megapixels.

*³ ISO 100-25600 expandable to ISO 50-102400 for shooting still images.

*⁴ Among digital still cameras. The viewfinder magnification is approx. 0.78x (with 50mm lens at infinity, -1m⁻¹). As of June 2015 based on Sony research.



Sony Alpha 1

Sonnar T* FE 55mm F1.8 ZA (SEL55F18Z), 1/160 sec., F8, ISO 100



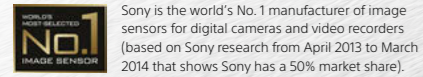
FE 90mm F2.8 Macro G OSS (SEL90M28G), 1/8 sec., F8, ISO 100



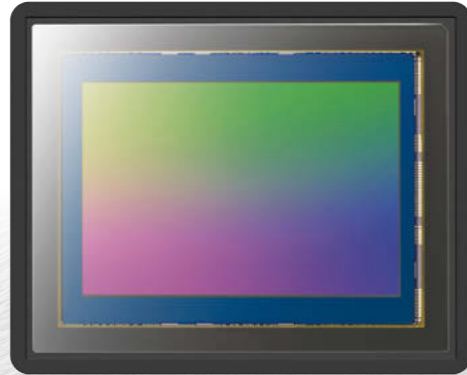
Distagon T* FE 35mm F1.4 ZA (SEL35F14Z), 2.5 sec., F11, ISO 100

Superior clarity, sensitivity, and response

Exmor R
CMOS Sensor



Sony is the world's No. 1 manufacturer of image sensors for digital cameras and video recorders (based on Sony research from April 2013 to March 2014 that shows Sony has a 50% market share).



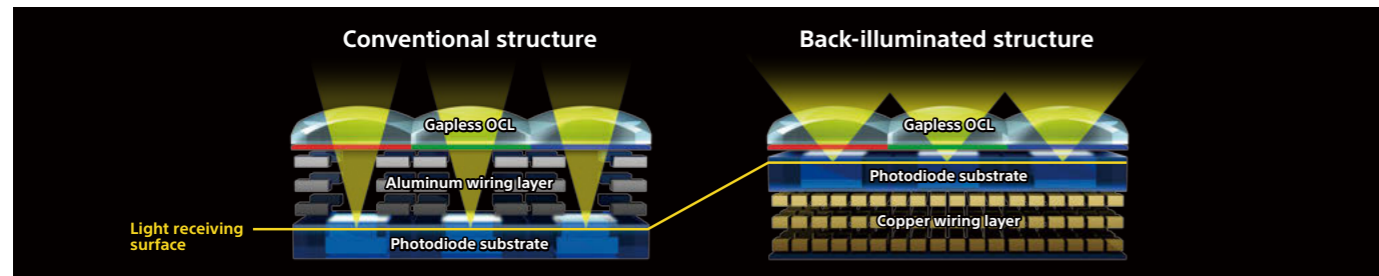
New 35mm full-frame Exmor R CMOS image sensor with 42.4 megapixels

The world's first*¹ back-illuminated 35mm full-frame Exmor R CMOS sensor achieves approx. 42.4 effective megapixel resolution, widely expanded sensitivity up to ISO 102400*², and extra-low noise performance to reveal fine details even in

enlargements of images. The back-illuminated structure enhances light collection efficiency and expands the circuitry scale — an advantage which, together with a copper wiring layer for faster data transmission, makes data output about 3.5 times faster*³.

The result: lightning-fast autofocusing response and absolutely clear 4K movies with full pixel readout.

*¹ Among digital still cameras equipped with a 35mm full-frame image sensor. As of June 2015 based on Sony research.
*² ISO 100-25600 expandable to ISO 50-102400 for shooting still images.
*³ In comparison with the α 7R.



BIONZ X

High-speed BIONZ X image processing engine

Witness more outstanding picture quality. With detail reproduction technology to faithfully capture people's perception of realism, diffraction-reducing technology to maintain sharp, fine clarity even at smaller aperture settings, area-specific noise

reduction to reduce noise adaptively according to image area characteristics and reproduce greater detail, plus more, the BIONZ X image processing engine finely tunes the new image sensor's 42.4-megapixel data, for truer, clearer, more natural depiction.

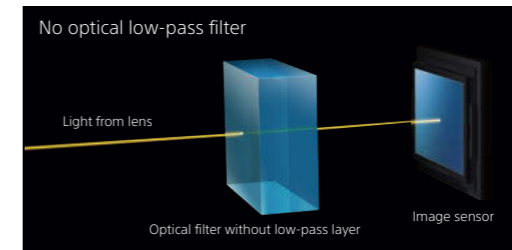


ISO 3200 ISO 12800

Raising resolution even higher

No optical low-pass filter

Since the camera has no optical low-pass filter that can compromise high resolution, every shot you take benefits from the fine edge-to-edge clarity and detail that the higher-performance image sensor and α lenses deliver.



All FE lenses maximize resolution

The growing group of FE lenses (35mm full-frame compatible E-mount lenses) — all carefully developed to match full-frame image sensors employing increasing numbers of pixels — makes the most of the 42.4-megapixel high-resolution performance of the α 7R II.



Durable reduced-vibration shutter

The new shutter's braking mechanism cuts mechanical front/rear curtain vibration by about 50%*¹. Also, use the electronic front curtain for even less vibration. This not only minimizes camera shake that can blur details in 42.4-megapixel images — it makes the shutter durable enough to have been tested to 500,000*² cycles.



*¹ In comparison with the α 7R.
*² According to Sony internal testing, with the electronic front curtain shutter activated.

Silent Shooting

Silent Shooting features an electronic shutter that is noiseless and causes no vibration, so you can shoot high-resolution images without camera shake.

Fast Hybrid AF takes better aim at what's to come

Your shots of action can look clearer than ever, thanks to a new full-frame image sensor that assures wide-area coverage with 399 focal plane phase-detection AF points. With its accelerated readout and an advanced algorithm to anticipate subject movement, the sensor also makes

it possible for the Fast Hybrid AF system to raise speed, accuracy, and tracking performance to incredible heights. These smart capabilities outperform those of conventional AF systems to deliver crisper images that make the most of the camera's unprecedented 42.4-megapixel potential.

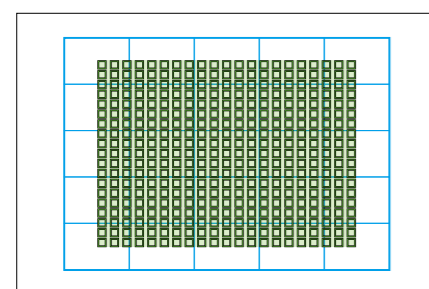
WIDE

More complete AF coverage

Even when the action is too unpredictable or sudden for you to see, the $\alpha 7R II$ has it covered. A full-frame image sensor providing the highest^{*1} number of focal plane phase-detection AF points, at 399, and the widest^{*2} coverage, of 45% of the image area, in the world provides extraordinary power to focus on a great range of action. 25-point contrast-detection AF coverage is also included.

^{*1} Among digital still cameras. As of June 2015 based on Sony research.

^{*2} Among digital still cameras equipped with a 35mm full-frame image sensor. As of June 2015 based on Sony research.



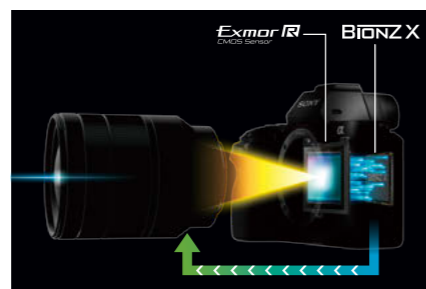
■ Phase-detection AF coverage (399 points)
■ Contrast-detection AF coverage (25 points)

FAST

Capture your subject without fail

Faster readout thanks to the back-illuminated structure of the image sensor improved AF response so dramatically that the AF system of the $\alpha 7R II$ instantly captures even fast-moving subjects with razor-sharp clarity. Phase-detection AF, contrast-detection AF and BIONZ X also contribute to speedy, accurate AF performance, while a more advanced algorithm enhances the accuracy of subject detection, optimizing lens drive movement to raise AF speed by 40%*.

* In comparison with the $\alpha 7R$.



STEADFAST

Brilliant AF and AE tracking even at 5fps

Rely on the $\alpha 7R II$ to track your subject regardless of how it moves, thanks to dense AF point coverage over a wide area, the new image sensor's accelerated readout for highly efficient processing of vast amounts of phase-detection information, and an advanced motion-detection algorithm that accurately predicts even quick imminent movements. This allows you to shoot 5fps continuously even with steadfast AF and AE tracking engaged, so you can capture a decisive moment in sharp detail at the proper exposure.



Fast Hybrid AF for movies

Simultaneous readout of live-view image and phase-detection AF information from the image sensor makes the extra-precise, smooth Fast Hybrid AF of the $\alpha 7R II$ great for shooting movies – especially 4K

movies which can otherwise reveal even a slight lack of sharpness in subject focus. AF drive speed and AF Tracking Sensitivity are also adjustable to support creative moviemaking.



FE 70-200mm F4 G OSS (SEL70200G), 1/1000 sec., F4.5, ISO 200

Focal plane phase-detection AF with A-mount lenses

The $\alpha 7R II$ offers focal plane phase-detection AF even when an A-mount lens is mounted^{*1} via LA-EA3 (LA-EA1^{*2}) mount adaptor. So you can take advantage of the wide AF coverage of 399 focal plane phase-detection AF points, high-speed response, high tracking capability and high optical performance of A-mount lenses.

^{*1} A-mount lenses with SSM or SAM only. Choose phase-detection AF or contrast-detection AF in AF System menu.
^{*2} Images are recorded in APS-C format.



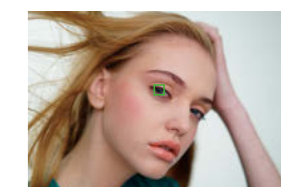
Expand Flexible Spot

If the selected AF point is not positioned on your subject, the $\alpha 7R II$ automatically uses AF points surrounding the selected point to support precise focus.



Enhanced Eye AF

Now also available in AF-C focus mode, Eye AF automatically detects and tracks an eye of even a moving subject, for more framing freedom.



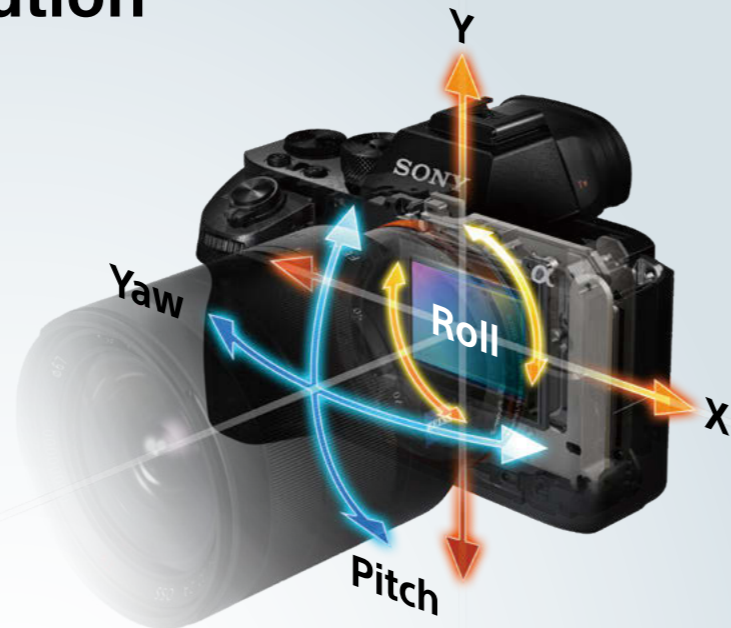
5-axis
SteadyShot
INSIDE

Steadier images worthy of higher resolution

5-axis image stabilization

The 5-axis image stabilization system is fine-tuned for high-resolution image sensors. It accurately compensates for five types of camera shake that can compromise handheld shooting of the camera's 42.4-megapixel images, so you can zoom in on faraway subjects, shoot close-ups and capture night scenes with minimal camera shake blur. Camera shake compensation is equivalent to using a 4.5-step* faster shutter speed, allowing you to take advantage of a wider range of shutter speeds.

* Based on CIPA standard. Pitch/yaw shake only. With Sonnar T* FE 55mm F1.8 ZA lens mounted. Long exposure NR off.



Note: When using a third-party mount adaptor, performance, functionality and operation are not guaranteed and Sony will take no responsibility if a malfunction occurs.

Compatibility with wide-ranging mountable lenses

5-axis image stabilization lets you enjoy unparalleled handheld shooting freedom with more of your favorite mountable lenses. The short flange-back distance in the E-mount α 7R II extends compatibility with a range of lenses.



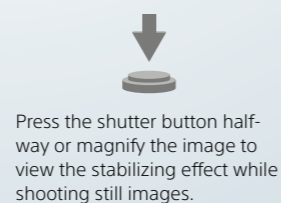
E-mount lenses

A-mount lenses



Stable viewfinder image

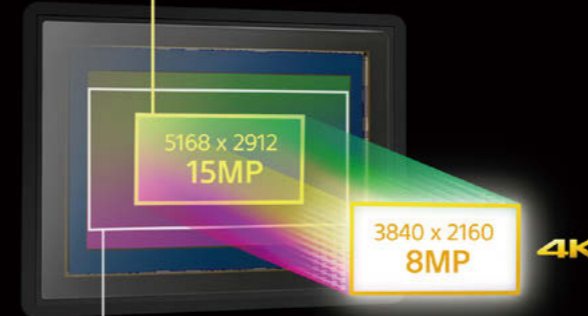
You can monitor the stabilizing effects of camera shake compensation in the viewfinder or LCD screen while shooting still images by pressing the shutter button halfway or magnifying the image, and while shooting movies by entering movie mode. Even when using a telephoto or macro lens, you can fine-tune framing and focusing without stress for steady results.



4K The ultimate high-resolution 4K movie experience

3840 x 2160

Super 35mm equivalent in 4K / Full HD



35mm full frame 16:9 in 4K / Full HD



4K movie quality hits an all-time high

Featuring full pixel readout without pixel binning, the α 7R II shooting in Super 35mm format collects information from approx. 1.8x as many pixels as required for 4K (QFHD: 3840 x 2160 pixels) movies. The data is then condensed to produce 4K movies, realizing images that

exhibit higher resolution and less moire and jaggies than typical 4K movies. With the world's first* camera to offer 4K movie recording in full-frame format, you can also capture the expansive power that the full-frame image sensor can express in 4K resolution.

* Among digital still cameras equipped with a 35mm full-frame image sensor. As of June 2015 based on Sony research.

High-bit-rate XAVC S format* for 4K recording

XAVC S

XAVC S format now supports 4K recording at maximum 100Mbps bit rate as well as Full HD recording at 50Mbps, so the α 7R II can capture movies filled with finely detailed movement. For efficient handling, XAVC S files are minimized in size using Long GOP data compression, and contained in the widely compatible MPEG-4 AVC/H.264 format.

Recording format	Image size	Frame rate	Wrapper	Sampling	Bit-rate
XAVC S 4K	4K 3840 x 2160	30p (25p)/24p	MP4	4:2:0	100Mbps/60Mbps
XAVC S HD	FULL HD 1920 x 1080	60p (50p)/30p (25p)/24p	MP4	4:2:0	50Mbps
	HD 1280 x 720	120p (100p)			

* A class 10 or higher SDXC memory card is required to record movies in the XAVC S format. UHS Speed Class 3 is also required for recording at 100Mbps.

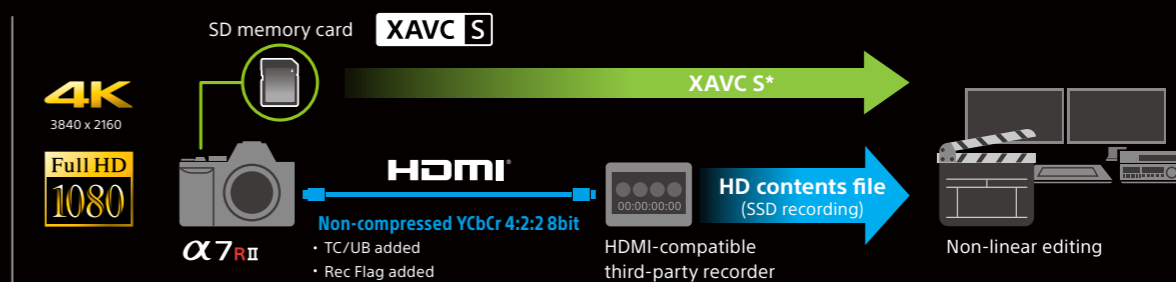
Advanced movie functions support professional workflow

The α 7R II optimizes your operations with Picture Profile to adjust image tone, S-Log2 Gamma (only ISO 800 or higher is available when S-Log2 Gamma is selected) and S-Gamut realizing wide dynamic range and wide color space, respectively, HD-resolution (1280 x 720 pixels) movies that

can be recorded at 120fps, time code and user bit for precise editing, and REC Control to sync recording in the camera and a compatible external recorder. The movies can be recorded in the camera* even while signals are output using Clean HDMI output function.

* Image will not be displayed on the camera's LCD screen when 4K signal is sent through the HDMI output.

Sample workflow



* A class 10 or higher SDXC memory card is required to record movies in the XAVC S format. UHS Speed Class 3 is also required for recording at 100Mbps.

Ready for the long run

XGA OLED Tru-Finder makes every view a vision

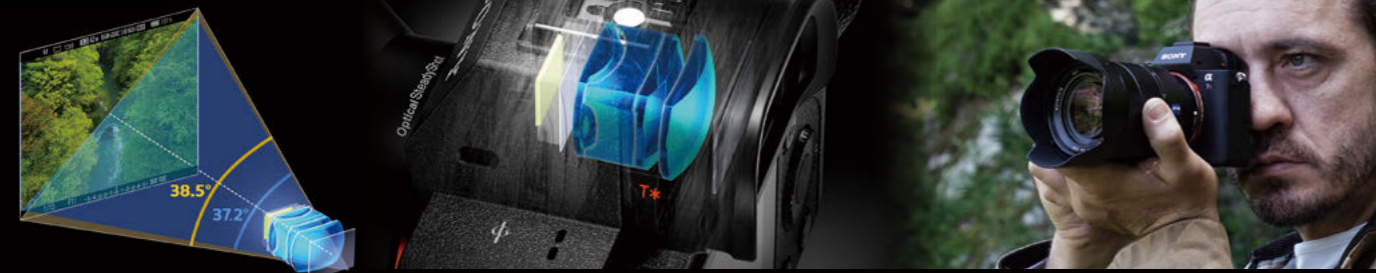
With the world's highest* magnification at 0.78x (full-display diagonal field of view: approx. 38.5 degrees; live-view-display diagonal field of view: approx. 37.2 degrees) among digital still camera viewfinders and a new four-lens optical system with double-sided aspherical elements,

the XGA OLED Tru-Finder provides views of cutting-edge clarity and contrast throughout the entire width and length of the display. Better yet, ZEISS T* Coating ensures absolutely minimal surface reflection. As an electronic viewfinder, the Tru-Finder can instantly show

how exposure compensation, white balance and other selected settings affect image appearance including background blur, and faithfully depicts the extraordinary 42.4-mega-pixel images, complementing the camera's powerful high-resolution performance.

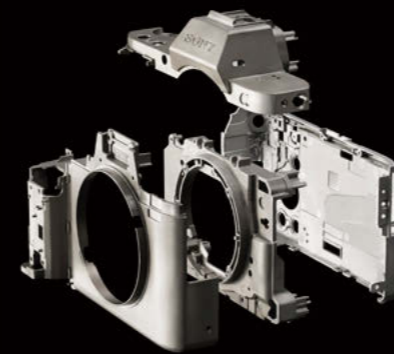
* The viewfinder magnification is approx. 0.78x (with 50mm lens at infinity, -1m⁻¹). As of June 2015 based on Sony research.

XGA OLED Tru-Finder



Tough magnesium alloy body

Designed for solid reliability and steady handling, the α 7R II's compact body is built to withstand the rigors of shooting in the field, thanks to an internal structure and top, front, and rear covers all made of strong, rigid magnesium alloy.



Meticulously crafted controls

Controls are refined for intuitive operation and immediate adjustment even while looking through the viewfinder. The front and rear dials have been particularly refined and positioned for easier, more efficient handling and turning. Also, a new mode dial locking mechanism prevents inadvertent changes of shooting mode at all times.



Enhanced grip and shutter button

The grip is refined in shape and height to support a more secure grasp of the camera even when a large lens is mounted. This also contributes to more confident operation of the shutter button and dials. Moreover, the shutter button has been reshaped and shifted forward to enable more natural shooting with less camera shake.



Power supply via USB

Operation of the α 7R II can be powered via USB connection to a PC or mobile battery. This conserves the camera's battery, allowing you extended use of the camera without worrying that the battery will run out. When the camera is turned off, the battery can be charged via the same connection.

Convenient tiltable LCD screen

The LCD screen tilts upward approx. 107 degrees and downward approx. 41 degrees to accommodate wide-ranging shooting angles. This flexibility combines with compact mobility to greatly expand your shooting options. Viewing is also clear under direct sunlight thanks to WhiteMagic™ technology that nearly doubles the brightness of the display through a unique RGBW pixel structure for easier checking of the focus and image details.

Easy button customization

You can assign any of 64 functions* to any of 10 customizable buttons as you like. This makes operation more intuitive, quick and easy, and is extra-convenient for accessing such functions as starting and stopping of movie recording and switching between viewfinder and monitor.

* Some functions can only be assigned to certain buttons.

Robust lens mount

The strength and rigidity of the body and lens mount have been enhanced to provide an especially solid foundation for mounting large, heavy lenses such as super telephoto lenses and those preferred for movie shooting.

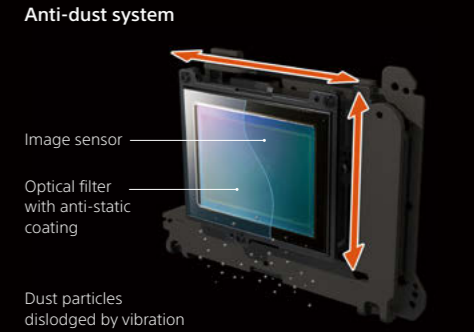
Dust and moisture resistance

Enjoy carefree shooting in tough environments, thanks to comprehensive dust and moisture resistance measures that help prevent water and dust from entering the body. These measures include sealing around the buttons and dials, as well as a protective double-layered structure that tightly interlocks panels and components.

Note: This camera is designed for optimal dust and moisture resistance, but is not waterproof or splashproof.

Anti-dust system and coating

To keep your photos blemish-free, a special anti-static coating on the surface of the optical filter suppresses the attachment of both dry and moist dust particles when changing lenses. An anti-dust mechanism also vibrates at high speed when you select Cleaning Mode, to remove any particles adhering to the filter.



A wealth of possibilities at your command

Connect to smartphones and tablets with one touch!

Thanks to built-in Wi-Fi and NFC™ (Near Field Communication)*, you can instantly transfer a photo or MP4 movie to an Android™ device simply by touching the α7R II with the receiving smartphone or tablet,

then upload it directly to your favorite SNS with ease. Touching your mobile device with the camera can also activate Smart Remote Control, which is preinstalled in the camera and lets you control the camera's



shutter release from your smartphone or tablet. Setting up your mobile device is as simple as downloading a free PlayMemories Mobile app (www.sony.net/pmm/).

* Requires NFC-compatible Android device.



PlayMemories Camera Apps™

PlayMemories Camera Apps www.sony.net/pmca

PlayMemories Camera Apps download service lets you add new functions to your camera's feature set to heighten photographic expression according to your creative needs.



Note: Requires a valid Sony Entertainment Network account. App availability varies by region. Some apps require a fee.

Time-lapse

Create dramatic time-lapse movies with this innovative app, which records images at intervals and combines them in a movie.

NEW Angle Shift Add-on

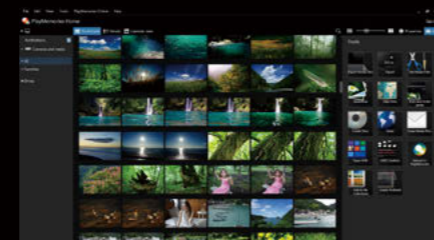
You can easily add pan, tilt, zoom and other effects to your time-lapse movie, right in the camera, without extra equipment or computer editing. The camera can then create a new HD time-lapse movie of great impact from the high-resolution still images that you originally shot to make your movie.

PlayMemories Home™

PlayMemories Home

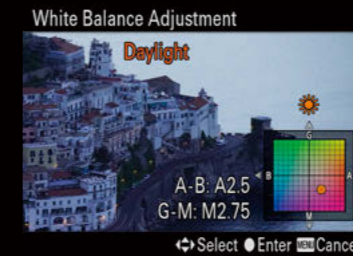
Easy-to-use image management software installs onto Windows and Mac computers. Use it for easy viewing, editing and printing. You can also upload and share content via network services.

Note: Features are different on Mac and Windows versions.



More precise white balance adjustment

The α7R II offers more white balance adjustment steps (twice as many on the amber-blue axis; four times as many on the green-magenta axis) than before, so you can finely tune white balance with more subtle precision for more natural colors.



Multi Frame NR (Noise Reduction)

This mode composites four shots to significantly suppress noise and raise sensitivity, letting you clearly capture dark scenes without a tripod or flash. Camera shake blur is also lowered while contrast and detail are raised.

ISO Auto Minimum Shutter Speed

Prevent blur in a shot of a moving subject by setting a shutter speed at which ISO sensitivity starts changing when ISO AUTO (while in P or A mode, or in Multi Frame NR) is selected.

1200-zone Evaluative Metering

Ample data from 1200-zone metering and focal plane phase-detection AF points allows for more precise control of light volume from an external flash that complements ambient light. Choose Multi-segment, Center-weighted or Spot metering mode.

Number of recordable frames for single media

(Memory Stick PRO Duo, Image size L 42M, aspect ratio 3:2)

	8GB	16GB	32GB	64GB
Standard	770	1,550	3,100	6,200
Fine	520	1,000	2,100	4,200
Extra fine	270	540	1,050	2,150
RAW & JPEG	130	260	520	1,050
RAW	170	350	700	1,400

D-range Optimizer (DRO)

In difficult lighting, DRO corrects your images to achieve smoother, more natural gradations with more detail in the highlights and shadows. You can use it during continuous shooting and when photographing moving subjects.

Focus Magnifier & Peaking function

You can clearly magnify the image to simplify manual fine-tuning of the focus whether shooting still images or movies. The Peaking function can also be activated to colorize the most sharply focused areas of your image for quick confirmation.

Image Data Converter

Advanced features enable manipulation, conversion and management of full-resolution RAW images. You can expertly adjust exposure, white balance, tonal curves, saturation, contrast, hue and sharpness – as well as apply DRO and vignetting compensation.

Movie recording time for single media (Hours:Minutes:Seconds)

	16GB	32GB	64GB	128GB
XAVC S 4K 30p 100M / 25p 100M	-	-	1:15:00	2:35:00
XAVC S 4K 30p 60M / 25p 60M	-	-	2:05:00	4:15:00
XAVC S 4K 24p 100M	-	-	1:15:00	2:35:00
XAVC S 4K 24p 60M	-	-	2:05:00	4:15:00
XAVC S HD 60p 50M / 50p 50M	-	-	2:35:00	5:10:00
XAVC S HD 30p 50M / 25p 50M	-	-	2:35:00	5:10:00
XAVC S HD 24p 50M	-	-	2:35:00	5:10:00
XAVC S HD 120p 50M	-	-	2:35:00	5:10:00
AVCHD 60i 24M (FX) / 50i 24M (FX)	1:25:00	3:00:00	6:00:00	12:05:00
AVCHD 60i 17M (FH) / 50i 17M (FH)	2:00:00	4:05:00	8:15:00	16:35:00
AVCHD 60p 28M (PS) / 50p 28M (PS)	1:15:00	2:30:00	5:05:00	10:15:00
AVCHD 24p 24M (FX) / 25p 24M (FX)	1:25:00	3:00:00	6:00:00	12:05:00
AVCHD 24p 17M (FH) / 25p 17M (FH)	2:00:00	4:05:00	8:15:00	16:35:00
MP4 60p 28M / 50p 28M	1:15:00	2:35:00	5:20:00	10:40:00
MP4 30p 16M / 25p 16M	2:00:00	4:10:00	8:25:00	16:55:00
MP4 1280 x 720 30p 6M / 25p 6M	5:20:00	10:55:00	22:00:00	44:10:00

• Recommended memory cards for movie recording in AVCHD/MP4 formats: Memory Stick PRO Duo (Mark2), Memory Stick PRO-HG Duo, SD memory card/SDHC memory card/SDXC memory card (Class 4 or more).
 • Recommended memory card for movie recording in XAVC S format: SDXC memory card higher than Class 10.
 • The numbers in the table show approximate maximum recordable time obtained by totaling all movie files.
 • AVCHD movies are automatically divided into separate files up to a maximum of 2GB each.

Bright Monitoring

This function that boosts image brightness by changing shutter speed, for example, can be assigned to a customizable button for easy access when shooting a starry sky or other dark scene.

Creative Style

Creative Style settings bring out the character of your scene. Simply select any of 13 settings (Vivid, Portrait, etc.) and the camera will adjust image parameters. You can also fine-tune contrast, saturation* and sharpness to suit your preference.

* Not available when B/W or Sepia mode is selected.

Auto HDR (High Dynamic Range)

Auto HDR composites the best details from three exposures to expand the dynamic range of your images from darkest shadows to brightest highlights and capture all the tonal gradations seen by your naked eye.

Clear Image Zoom

Whether shooting still images or movies, this feature digitally zooms the center of your image up to 2x with nearly imperceptible degradation, thanks to proprietary By Pixel Super Resolution Technology.

Achieve your full potential

FE lenses clearly match camera capabilities

E-mount
35mm Full frame

Broaden your photographic horizons with Sony's expanding line of 35mm full-frame compatible E-mount lenses. All 13 of them (and those to come)

are designed to realize the full potential of the 42.4 megapixels of the **α7R II**.



FE 28mm F2
(SEL28F20)



Ultra Wide Converter
(SEL075UWC)



Fisheye Converter
(SEL057FEC)



Distagon T* FE 35mm F1.4 ZA
(SEL35F14Z)



Sonnar T* FE 35mm F2.8 ZA
(SEL35F28Z)



Sonnar T* FE 55mm F1.8 ZA
(SEL55F18Z)



FE 90mm F2.8 Macro G OSS
(SEL90M28G)



Vario-Tessar T* FE 16-35mm F4 ZA OSS
(SEL1635Z)



Vario-Tessar T* FE 24-70mm F4 ZA OSS
(SEL2470Z)



FE 24-240mm F3.5-6.3 OSS
(SEL24240)



FE 28-70mm F3.5-5.6 OSS
(SEL2870)

α SonyAlpha.info



FE 70-200mm F4 G OSS
(SEL70200G)



FE PZ 28-135mm F4 G OSS
(SELP28135G)



Sonnar T* FE 55mm F1.8 ZA (SEL55F18Z), 1/400 sec., F2.2, ISO 800

A-mount full-frame lenses expand perspectives

A-mount
35mm Full frame

With a Sony LA-EA3 or LA-EA4 mount adaptor, you can attach to the camera any member of the Sony A-mount full-frame lens family, which delivers optical performance worthy of the **α7R II**'s high resolution throughout a lineup that includes super telephoto and legendary ZEISS® lenses.



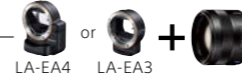
E-mount
35mm Full frame



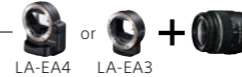
E-mount
35mm Full frame



E-mount
APS-C



A-mount
35mm Full frame



A-mount
APS-C

Lens compatibility

The **α7R II** is compatible with nearly all lenses from Sony's extensive lineups. E-mount lenses can be mounted directly on the camera, while A-mount lenses require the use of a mount adaptor. Whichever Sony lens you choose – whether A-mount or E-mount, with or without OSS – you can be sure of outstanding performance and optimized image stabilization.

Accessories to meet every need

Flash Units / Flash Accessories

- Flash HVL-F60M
- Flash HVL-F43M
- Flash HVL-F32M
- Flash HVL-F20M
- Off Camera Shoe FA-CS1M
- External Battery Adaptor FA-EB1AM
- Multi Flash Cable FA-MC1AM
- Extension Cable FA-EC1AM

Lights / Monitor / Bracket

- Battery Video IR Light HVL-LE1R1
- Ring Light HVL-RL1
- Battery Video Light HVL-LE1
- Clip-on LCD Monitor CLM-FHD5
- Bracket VCT-55LH
- LED Light HVL-LBPC

Microphones

- XLR Adaptor Kit XLR-K2M
- Shotgun Microphone ECM-CG60
- Stereo Microphone ECM-XYST1M

Cases & Straps

- Soft Carrying Case LCS-ELCB
- Soft Carrying Case LCS-PSC7
- Active Sling Bag LCS-ASB1
- Back Pack LCS-BP3
- Soft Carrying Case LCS-SC21
- Shoulder Strap STP-XH1
- Shoulder Strap STP-XH70

Lens Accessories

- Circular PL Filters VF-49CPAM / 55CPAM / 62CPAM / 67CPAM / 72CPAM / 77CPAM
- MC Protectors VF-49MPAM / 55MPAM / 62MPAM / 67MPAM / 72MPAM / 77MPAM
- Body Cap ALC-B1EM
- Rear Lens Cap ALC-R1EM
- Soft Carrying Case (for lens) LCS-BBM
- LCS-BBL
- LCS-BBXL

Vertical Grip

- Vertical Grip VG-C2EM

Mount Adaptors

- Mount Adaptor LA-EA4
- Mount Adaptor LA-EA3

Tripods / Remote Commander / Memory Cards / Others

- Remote Control Tripod VCT-VPR10
- Remote Control Tripod VCT-VPR1
- Screen Protect Semi Hard Sheet PCK-LM15
- HDMI Cable (Micro) DLC-HEU15/30
- Remote Commander RM-VPR1
- Remote Commander and IR Receiver Kit RMT-VP1K
- Remote Commander RMT-DSLR2
- Shoe Cap FA-SHC1M
- Memory Stick

Power Accessories

- Rechargeable Battery Pack NP-FW50
- Accessory Kit ACC-TRW
- Battery Charger BC-QM1
- AC Adaptor AC-PW20

Vertical Grip VG-C2EM

Secure vertical and horizontal handling with duplicate controls, including three customizable buttons. Can hold two batteries for longer shooting. Dust and moisture protection.



Flash Units

HVL-F60M



GN60 (105mm ISO-100)

HVL-F43M



GN43 (105mm ISO-100)

HVL-F32M



GN32 (105mm ISO-100)

Microphone XLR-K2M

Superior sound for full-frame moviemaking.



NEW Clip-on LCD Monitor CLM-FHD5

The CLM-FHD5 Full HD 5.0-type LCD monitor is perfect for checking focus of high-resolution camera images.



Full HD 1080



- Lens release button
- Image sensor
- AF illuminator/Self-timer lamp
- Mount index
- Mount
- Remote sensor
- Contacts
- For shooting: C3 (Custom 3) button
- For viewing: Enlarge button
- AF/MF/AEL switch lever
- For shooting: AF/MF button/AEL button
- For viewing: Image index button
- Diopter-adjustment dial
- Eye sensor
- Viewfinder
- MENU button
- Monitor
- Rear dial
- Control wheel
- Playback button
- For shooting: Fn button
- For viewing: Send to Smartphone button
- For shooting: C4 (Custom 4) button
- For viewing: Delete button
- Exposure compensation dial
- C1 (Custom 1) button
- Front dial
- Power switch/Shutter button
- C2 (Custom 2) button
- Built-in microphone
- Mode dial
- Mode dial lock release button
- Speaker
- Image sensor position mark
- Multi Interface Shoe
- Battery insertion slot
- Tripod socket hole
- Access lamp
- MOVIE button
- Hook for shoulder strap
- N mark
- Memory card cover
- Hook for shoulder strap
- Microphone jack
- Headphones jack
- Multi/Micro USB Terminal
- Charge lamp
- HDMI micro jack